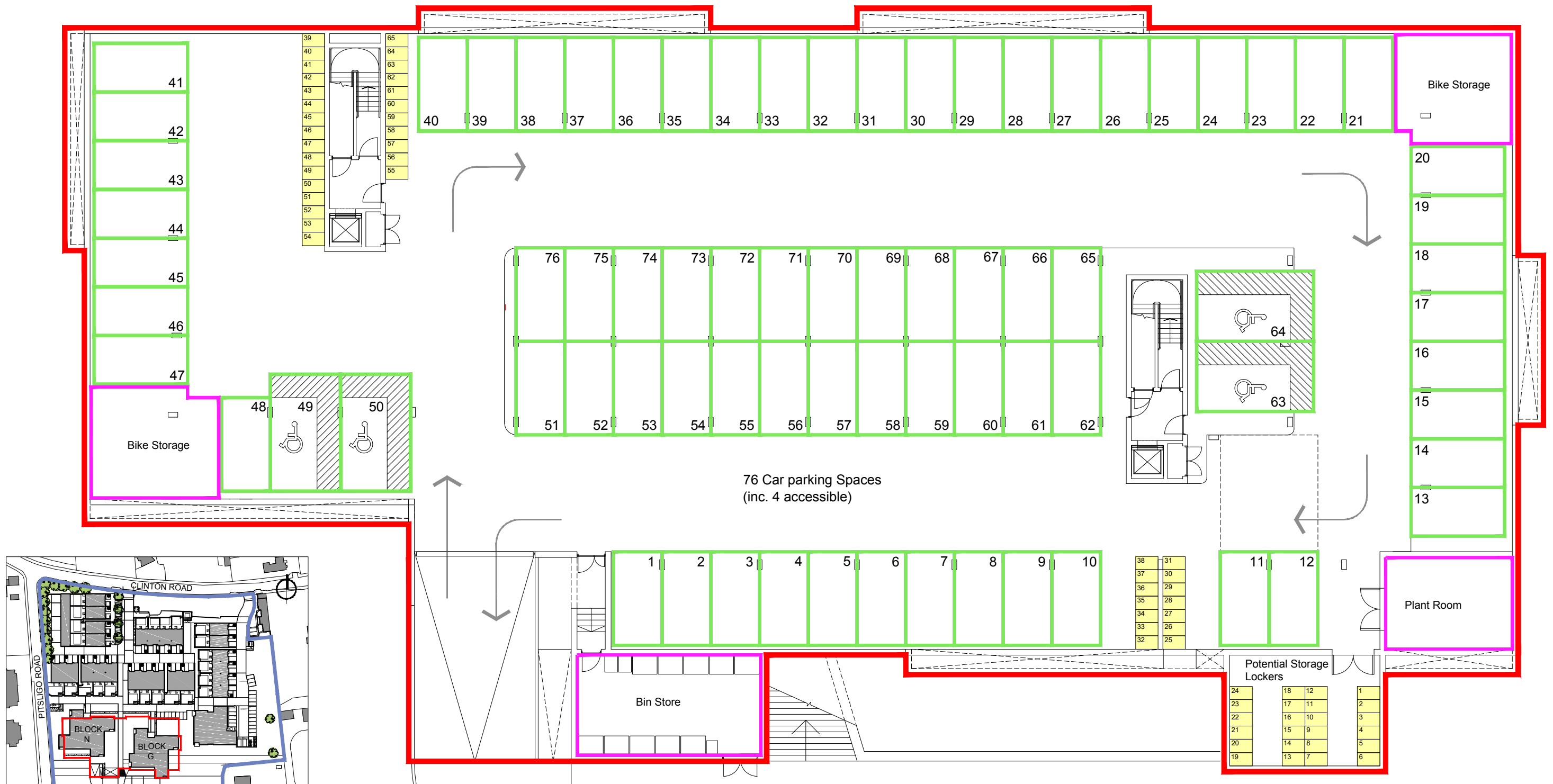


DPA unique identifier: MID11890-BASEMENT



01 Location Plan
1:2500 @ A3

KEY

- Development Boundary [Blue Line]
- Underground Car Park Boundary
- Car Parking Space XX
- Block G & N Common Parts
- Storage Locker Area

02 Basement - Title Plan
n.t.s

rev.	date	details	by	rev.	date	details	by	notes
P1	30.08.16	Changes [bike store, storage cages reintroduced] to layout requested by Client	kw					
P2	01.09.16	Storage locker numbering changes	kw					
P3	05.10.16	Additional Client changes to text, common zones & key	kw					
P4	16.10.16	Two lockers removed and remaining lockers renumbered	kw					
P5	20.10.16	Car park boundary updated to include ventilation outshoots and ramp area.	kw					
P6	05.12.16	Client change to wording of Key - Storage Locker Area	kw					

Woodcroft Residential Development
Pitsligo Road, Edinburgh
Cruden Homes East Ltd

drawing number	revision	drawing title	scale	nts
CPR(80)089	P6	Basement Layout Title Plan	date	20.02.14
status information		drawn	MJM	
		format	a1	

MLA MICHAEL LAIRD ARCHITECTS

5 Forres Street, Edinburgh EH3 6DE
T 0131 226 6991 F 0131 226 2771
mail@michaellaird.co.uk