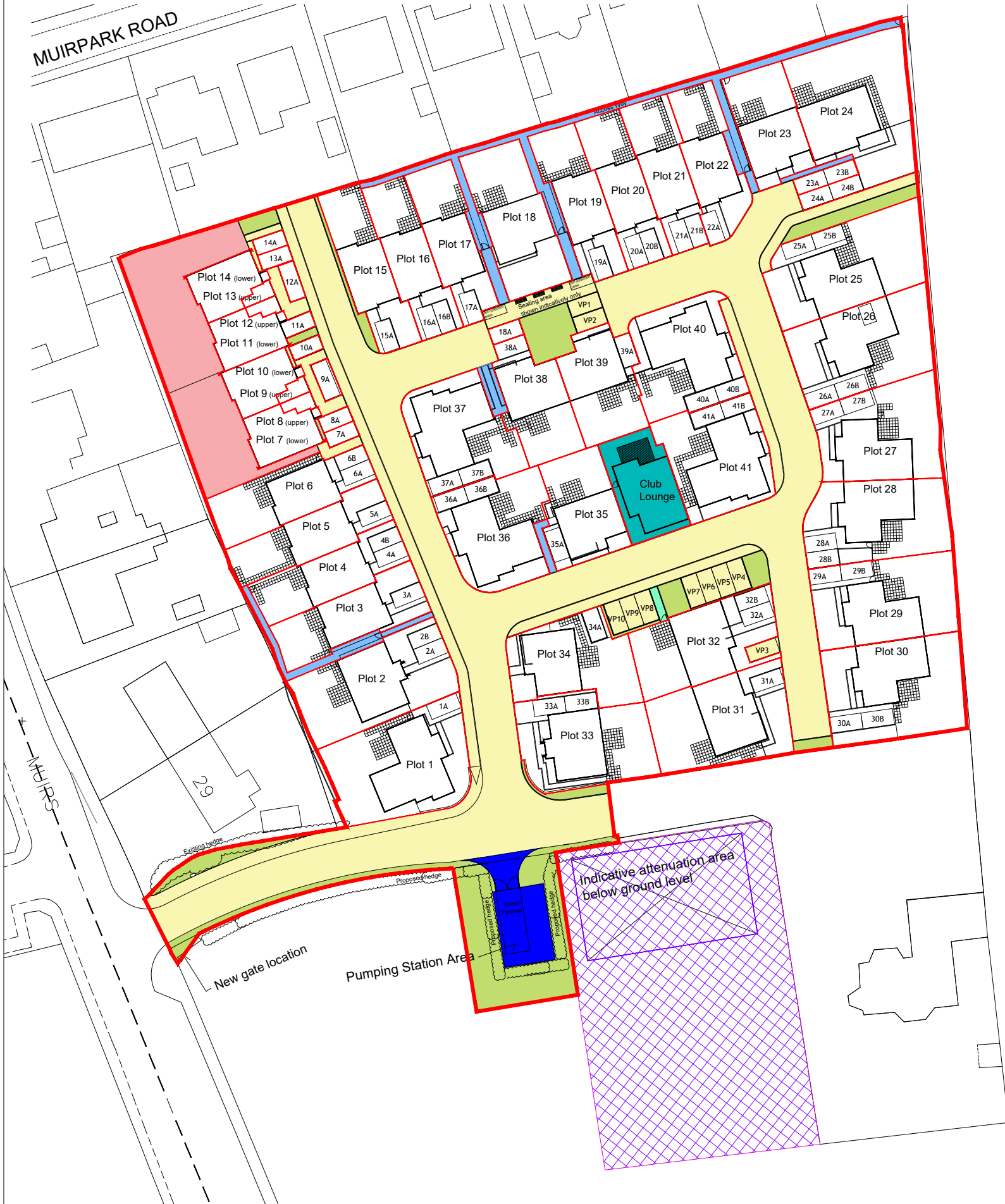
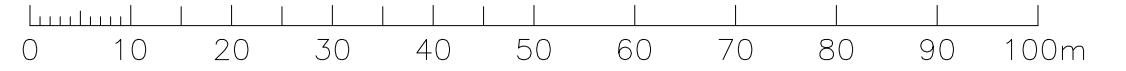
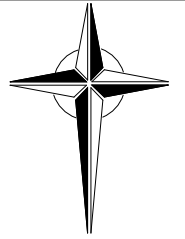
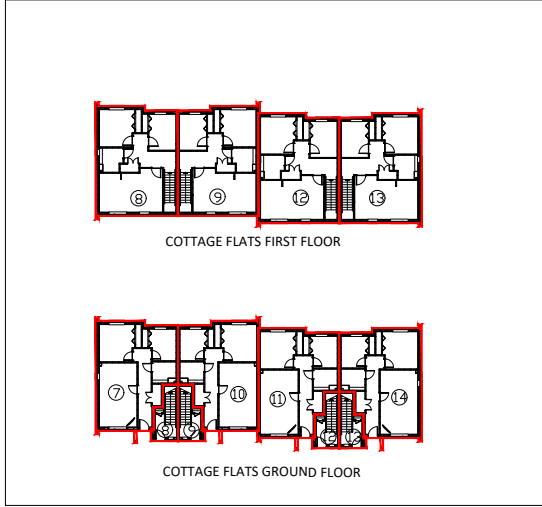


© This drawing is Copyright and the property of Cruden Homes (East) Ltd
It may not be reproduced or disclosed to a third party without written consent.



- Development boundary
- Plot boundary
- Private access roads
- Attenuation tanks soakaway - servitude
- Private shared footpath
- Open ground
- Shared garden for cottage flats
- Scottish Water pumping station
- Club House



The development registered under title KNR2266 and plots 1 to 41 within have been DPA approved by:
D MacDonald - 03 Aug 2021
David MacDonald (DPA Officer)

Project	Kinross	Drawing No.	(LG)005	Rev	A
Drawing	Development Plan Approval and Deed of Conditions Plan		Status	INFORMATION	
Scale	1:750	Drawn	JS	Date	04/12/20

CRUDEN HOMES
Firm foundations, flexible living
CRUDEN HOMES (EAST) LIMITED
CRUDEN HOUSE, 36 SOUTH GYLE CRESCENT,
EDINBURGH, EH12 9EB
TEL 0131 285 6600