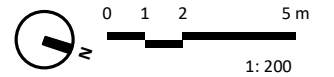
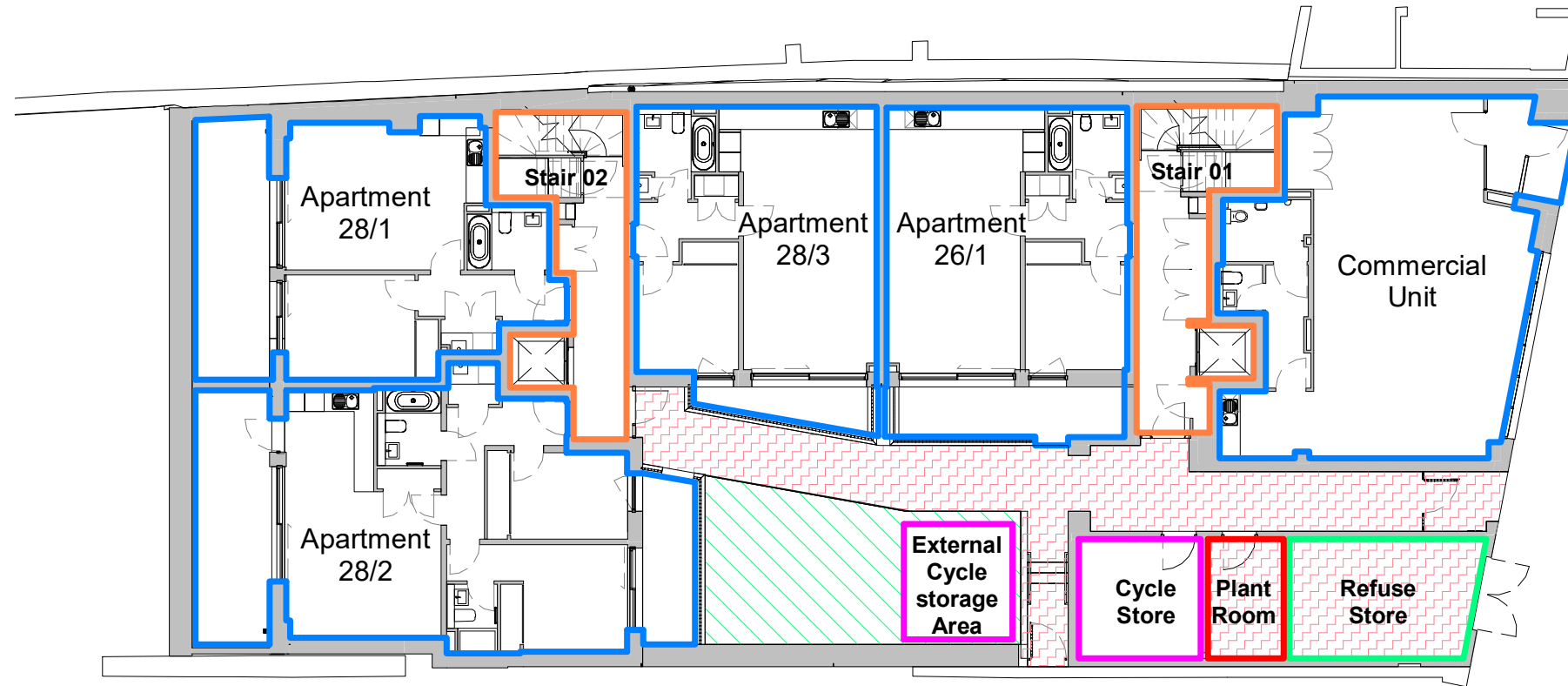


The Development registered under Title MID186166 and plots 26/1 to 26/11, 28/1 to 28/11 and a Commercial Unit within have been DPA approved.

*Charlotte Ross 20/12/2022*

Charlotte Ross (DPA Officer)



Formerly Morgan McDonnell Architecture Ltd.  
This drawing is the copyright of Morgan Architects Ltd. and must not be shared with any third parties without our written agreement.

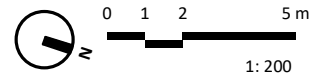
- Communal Gardens
- Communal Roof Terrace
- Development Common Parts
- Flat Boundary
- Stair Common Parts
- Cycle Store / External Cycle Storage Area
- Refuse Store
- Plant Room

Rev.	Date	Description	By
C	2022 12 05	Cycle stores amended	LJ
B	2022 11 23	Plant Room added	LJ
A	2022 10 14	Various amendments	LJ
-	2022 10 04	Boundary lines updated	LJ

**M MORGAN ARCHITECTS**  
5 Advocate's Close  
Edinburgh  
EH1 1ND  
0131 332 4200  
mail@morganarchitects.co.uk

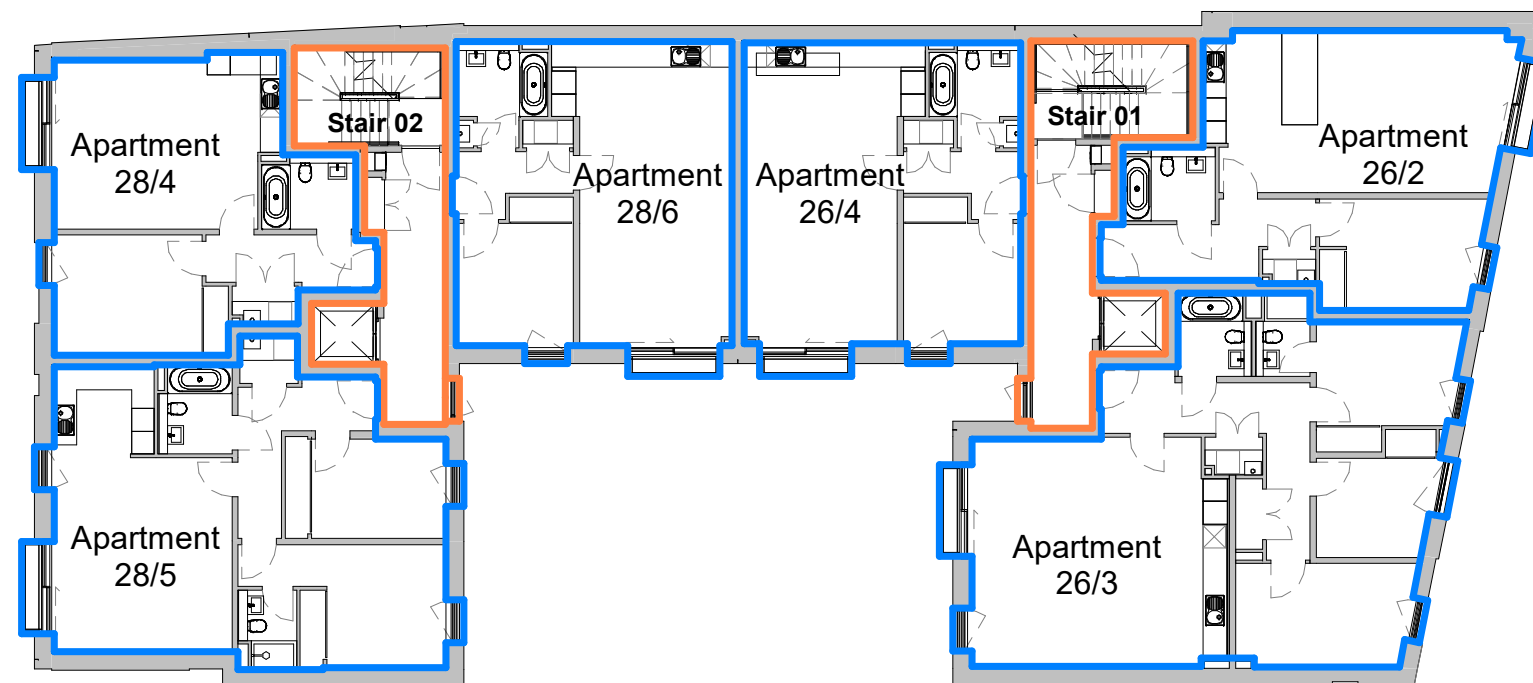
**Legal**  
Do not scale from this drawing

<b>Project:</b>	24 - 26 Calton Road, Edinburgh		
<b>Dwg Title:</b>	Ground Floor Plan as Proposed		
<b>Scale:</b>	1:200 @ A3		
<b>Date:</b>	2022 06 30		
<b>Drafting:</b>	Drawn: LJ	Checked: LJ	
<b>Job no.</b>	<b>Drawing No.</b>	<b>Rev</b>	
P14-050	L(LE)011	C	



Formerly Morgan McDonnell Architecture Ltd.  
 This drawing is the copyright of Morgan Architects Ltd. and must not be shared with any third parties without our written agreement.

- Communal Gardens
- Communal Roof Terrace
- Development Common Parts
- Flat Boundary
- Stair Common Parts
- Cycle Store
- Refuse Store

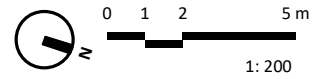


Rev.	Date	Description	By
A	2022 10 14	Various amendments	LJ
-	2022 10 04	Boundary lines updated	LJ

**M MORGAN ARCHITECTS**  
 5 Advocate's Close  
 Edinburgh  
 EH1 1ND  
 0131 332 4200  
 mail@morganarchitects.co.uk

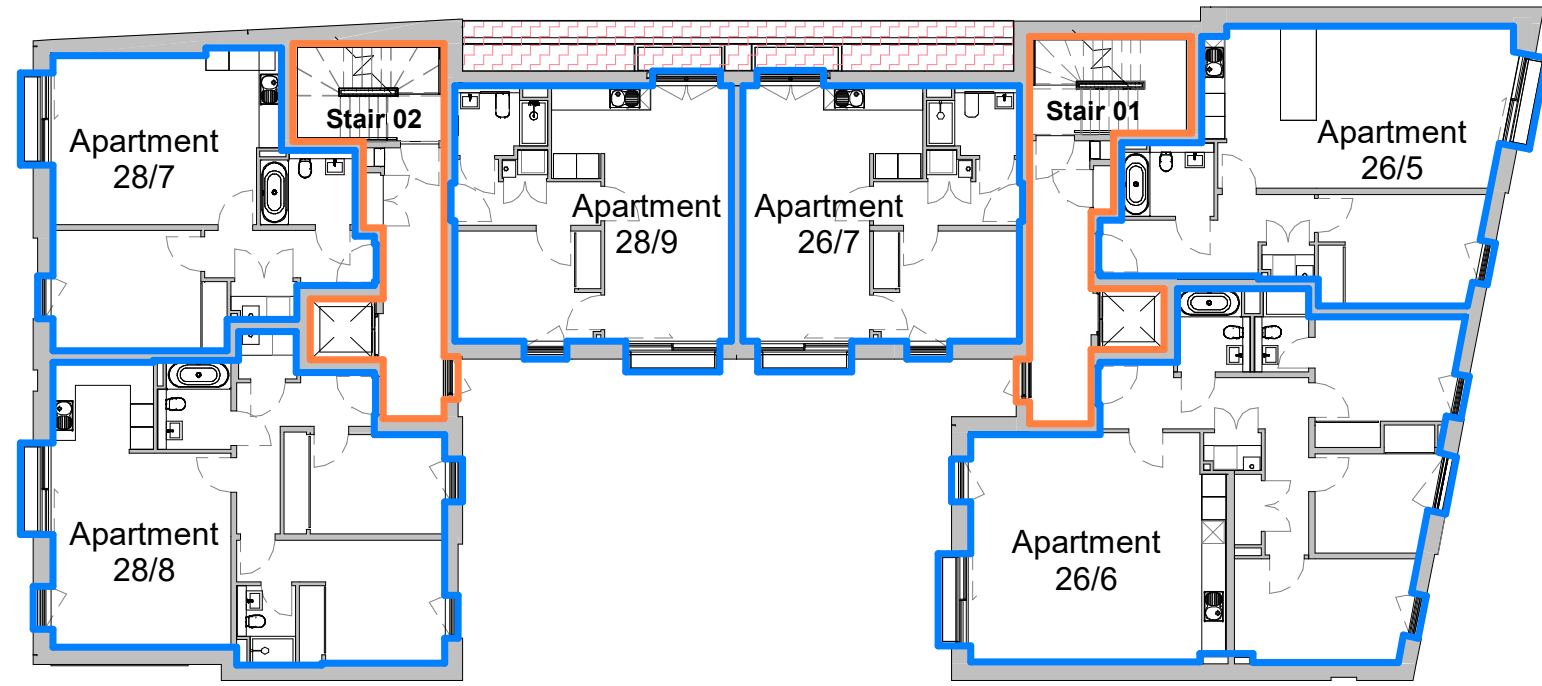
**Legal**  
 Do not scale from this drawing

<b>Project:</b>	24 - 26 Calton Road, Edinburgh		
<b>Dwg Title:</b>	First Floor Plan as Proposed		
<b>Scale:</b>	1:200 @ A3		
<b>Date:</b>	2022 06 30		
<b>Drafting:</b>	Drawn: LJ	Checked: LJ	
<b>Job no.</b>	<b>Drawing No.</b>	<b>Rev</b>	
P14-050	L(LE)012	A	



Formerly Morgan McDonnell Architecture Ltd.  
 This drawing is the copyright of Morgan Architects Ltd. and must not be shared with any third parties without our written agreement.

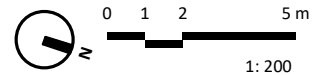
- Communal Gardens
- Communal Roof Terrace
- Development Common Parts
- Flat Boundary
- Stair Common Parts
- Cycle Store
- Refuse Store



Rev.	Date	Description	By
A	2022 10 14	Various amendments	LJ
-	2022 10 04	Boundary lines updated	LJ

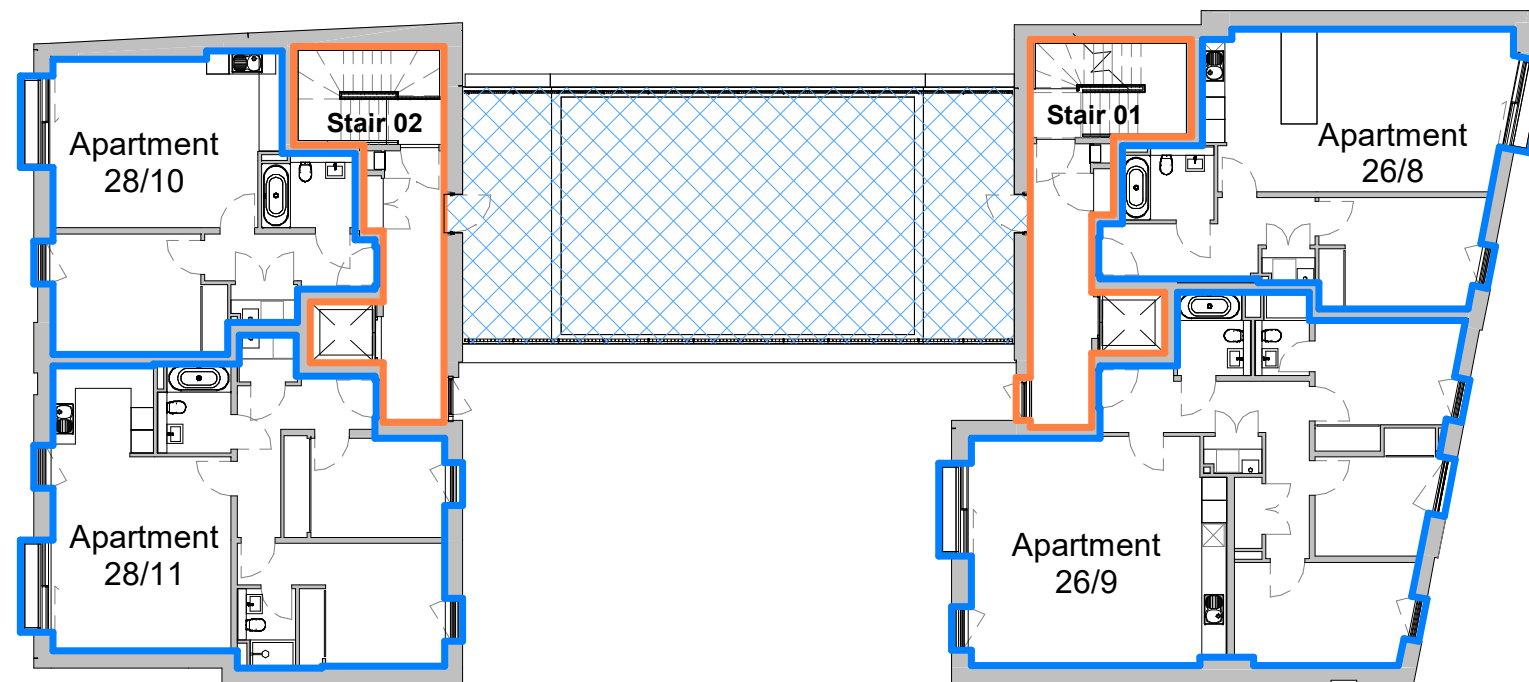
**M MORGAN ARCHITECTS**  
 5 Advocate's Close  
 Edinburgh  
 EH1 1ND  
 0131 332 4200  
 mail@morganarchitects.co.uk

Legal	
Do not scale from this drawing	
<b>Project:</b>	24 - 26 Calton Road, Edinburgh
<b>Dwg Title:</b>	Second Floor Plan as Proposed
<b>Scale:</b>	1:200 @ A3
<b>Date:</b>	2022 06 30
<b>Drafting:</b>	Drawn: LJ      Checked: LJ
<b>Job no.</b>	<b>Drawing No.</b> <b>Rev</b>
P14-050	L(LE)013      A



Formerly Morgan McDonnell Architecture Ltd.  
 This drawing is the copyright of Morgan Architects Ltd. and must not be shared with any third parties without our written agreement.

- Communal Gardens
- Communal Roof Terrace
- Development Common Parts
- Flat Boundary
- Stair Common Parts
- Cycle Store
- Refuse Store

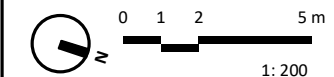


Rev.	Date	Description	By
A	2022 10 14	Various amendments	LJ
-	2022 10 04	Boundary lines updated	LJ

**M MORGAN ARCHITECTS**  
 5 Advocate's Close  
 Edinburgh  
 EH1 1ND  
 0131 332 4200  
 mail@morganarchitects.co.uk

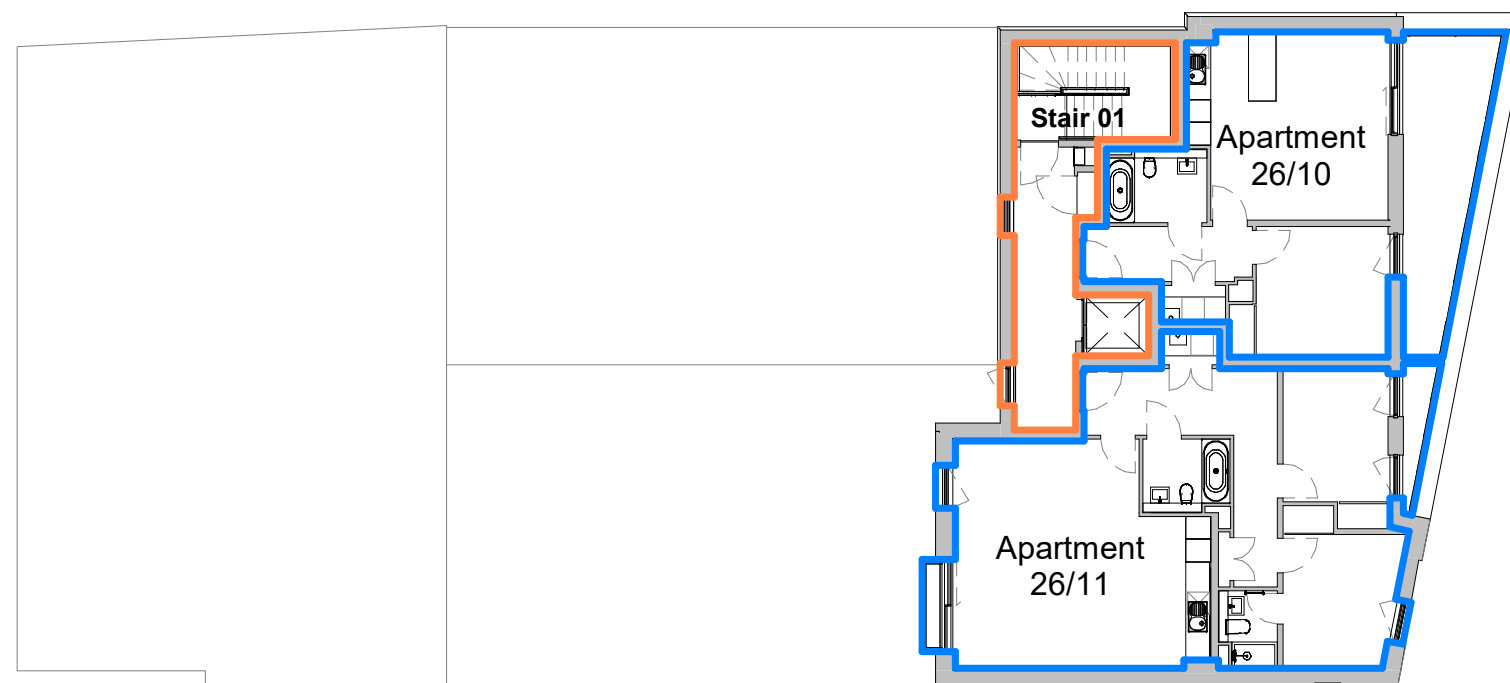
**Legal**  
 Do not scale from this drawing

<b>Project:</b>	24 - 26 Calton Road, Edinburgh		
<b>Dwg Title:</b>	Third Floor Plan as Proposed		
<b>Scale:</b>	1:200 @ A3		
<b>Date:</b>	2022 06 30		
<b>Drafting:</b>	Drawn: LJ	Checked: LJ	
<b>Job no.</b>	<b>Drawing No.</b>	<b>Rev</b>	
P14-050	L(LE)014	A	



Formerly Morgan McDonnell Architecture Ltd.  
 This drawing is the copyright of Morgan Architects Ltd. and must not be shared with any third parties without our written agreement.

- Communal Gardens
- Communal Roof Terrace
- Development Common Parts
- Flat Boundary
- Stair Common Parts
- Cycle Store
- Refuse Store

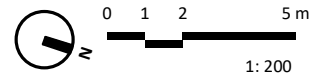


Rev.	Date	Description	By
A	2022 10 14	Various amendments	LJ
-	2022 10 04	Boundary lines updated	LJ

**M MORGAN ARCHITECTS**  
 5 Advocate's Close  
 Edinburgh  
 EH1 1ND  
 0131 332 4200  
 mail@morganarchitects.co.uk

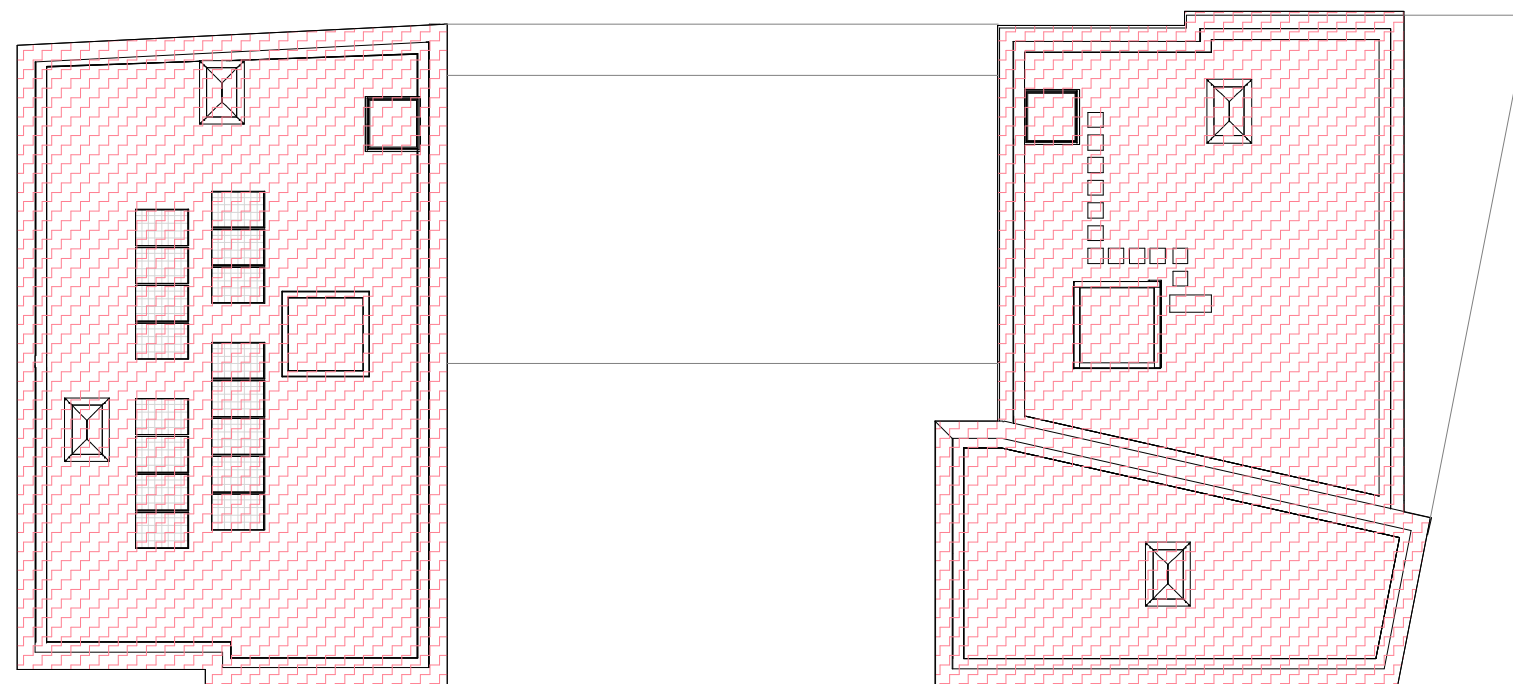
**Legal**  
 Do not scale from this drawing

<b>Project:</b>	24 - 26 Calton Road, Edinburgh		
<b>Dwg Title:</b>	Fourth Floor Plan as Proposed		
<b>Scale:</b>	1:200 @ A3		
<b>Date:</b>	2022 06 30		
<b>Drafting:</b>	Drawn: LJ	Checked: LJ	
<b>Job no.</b>	<b>Drawing No.</b>	<b>Rev</b>	
P14-050	L(LE)015	A	



Formerly Morgan McDonnell Architecture Ltd.  
 This drawing is the copyright of Morgan Architects Ltd. and must not be shared with any third parties without our written agreement.

- Communal Gardens
- Communal Roof Terrace
- Development Common Parts
- Flat Boundary
- Stair Common Parts
- Cycle Store
- Refuse Store



Rev.	Date	Description	By
A	2022 10 14	Various amendments	LJ
-	2022 10 04	Boundary lines updated	LJ

**M MORGAN ARCHITECTS**  
 5 Advocate's Close  
 Edinburgh  
 EH1 1ND  
 0131 332 4200  
 mail@morganarchitects.co.uk

**Legal**  
 Do not scale from this drawing

<b>Project:</b>	24 - 26 Calton Road, Edinburgh
<b>Dwg Title:</b>	Roof Plan as Proposed
<b>Scale:</b>	1 : 200 @ A3
<b>Date:</b>	2022 06 30
<b>Drafting:</b>	Drawn: LJ      Checked: LJ

Job no.	Drawing No.	Rev
P14-050	L(LE)016	A