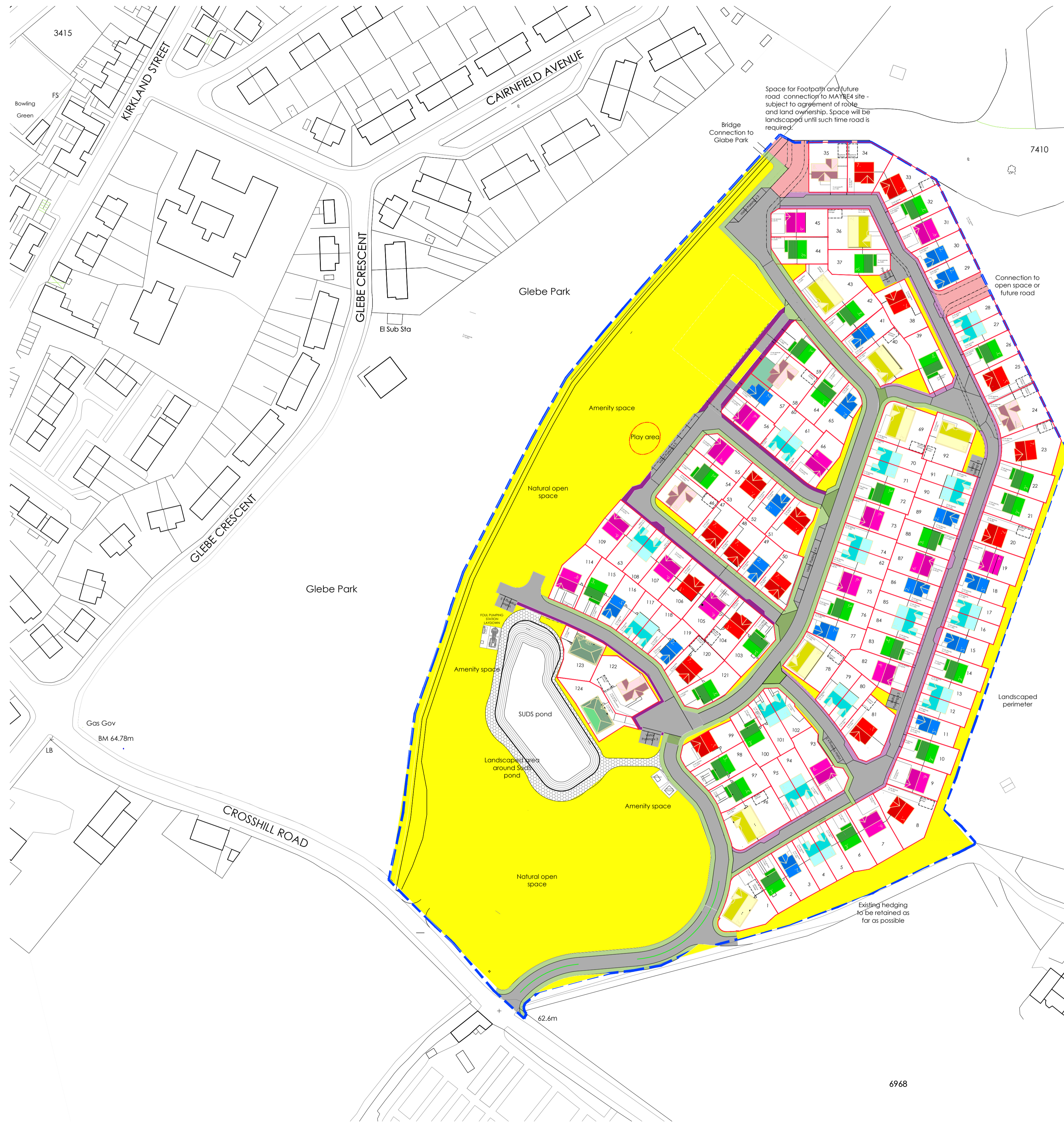


NOTES
 Do not scale from this drawing. All dimensions to be checked by the contractor before construction and prior to the fabrication of any component. Discrepancies to be reported to LMA Architects.
 This drawing is copyright of LMA Architects. This drawing cannot be copied or reproduced in part or full without the written consent of LMA Architects.

NORTH



KEY

- Pavements
- Road

The Development registered under title AYR118198 & AYR118135 and plots 1 to 66, 69 to 109 and 114 to 124 within have been DPA approved by:
Craig McFadden - 21 December 2021
 Craig McFadden (DPA Officer)

LMA ARCHITECTS

The Atrium | 6 New Road | Ayr, KA8 8EX | 01292611727
 100 West George Street | Glasgow, G2 1PP | 01412642991
 studio@l-m-a.co.uk | www.l-m-a.co.uk

Client
 Milestone Developments

Project
 Housing Development

Maybole

Description
 Proposed Title Site Plan Layout

Job Number	Drawing Number	Revision
2086	L(00)104	
Scale	Drawn / Checked By	Date
1:1000 @ A1	JM/NH	Oct 21