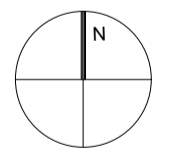


Drawing to be scaled for planning purposes only. Dimensions must not be scaled from this drawing for construction. All dimensions to be checked prior to commencing work or prior to any components being manufactured. Any discrepancy to be reported. All work and material to comply fully with all current & relevant British Standards Codes of Practice, building regulations, IEE regulations and all HSE acts.

Revisions	Rev	Date	Comment
A	Nov 20		Amended in line with client comments, block 01 omitted, coachhouse plots amended, Site boundary amended
B	Nov 20		Amended per client discussions
C	Nov 20		Amendments per legal review, legend, boundaries and parking updated
D	Jan 21		Updated in line with Cruden comments dated 11/01/21
E	Feb 21		Updated in line with Cruden comments and grain/substation areas amended per client comments
F	April 21		Apt block (76-81) handed as per planning change
G	Sept 22		Boundaries to plots 73, 74, 75 amended as per client instructions

- Legend**
- Development boundary
 - Individual plot boundary
 - Adopted roads
 - Adopted footpaths
 - Common soft landscaping to be maintained by factor
 - Common hard landscaping/footpath to be maintained by factor
 - Common to plots 76-81 inclusive
 - Substation - Energetics
 - / / / / / 1m right of access all round substation
 - Parking spaces for Plot 41 within ground floor of coach-house Plot 65
 - Parking space for Plot 54 within ground floor of coach-house Plot 63
 - Parking space for Plot 55 within ground floor of coach-house Plot 64
 - Parking space for Plot 56 within ground floor of coach-house Plot 64
 - Parking space for Plot 57 within ground floor of coach-house Plot 64
 - Parking space for Plot 62 within ground floor of coach-house Plot 63
 - Parking spaces for Plot 68 within ground floor of coach-house Plot 93
 - Parking space for Plot 69 within ground floor of coach-house Plot 93
 - Parking spaces for Plot 72 within ground floor of coach-house Plot 98
 - Parking spaces for Plot 97 within ground floor of coach-house Plot 96
 - X X X X External car parking space in front of coach-house (hatch coloured as per notes above per relevant plot)
 - / / / / / 'Grain' Cabinet (fibre) and future expansion area

Notes :
 Site Grid Reference: NT443758
 E: 344321 N: 675820
 all dimensions 'or thereby'



MGA ARCHITECTURE
 www.mgaarchitecture.co.uk

Project
Residential Development
Longniddry
PFPA Developments

Drawing
Development Plan Approval
Ground Floor Site Layout

Date **Oct 20** Scales **1:500@A1**

Project Nr. **1335** Drawing Nr. **DPA-01** Rev. **G**

22 Rubislaw Terrace, Aberdeen, AB10 1XE - 01224 643117 - office@m-g-a.co.uk
 This drawing is copyright of Michael Gilmore Associates Ltd. ©

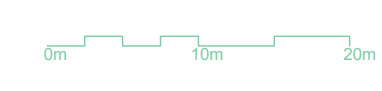


The Development registered under Title ELN25110 and plots 40 to 98 within have been DPA approved by:

D. McIntyre - 7th October 2022

Danielle McIntyre (DPA Officer)

Site Layout - Ground Floor Level

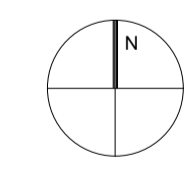


Drawing to be scaled for planning purposes only. Dimensions must not be scaled from this drawing for construction. All dimensions to be checked prior to commencing work or prior to any components being manufactured. Any discrepancy to be reported. All work and material to comply fully with all current & relevant British Standards Codes of Practice, building regulations, IEE regulations and all HSE acts.

Revisions	Rev	Date	Comment
A	Nov 20		Site boundary amended, legend updated re coach-houses
B	Nov 20		Amended per client discussions
C	Nov 20		Amendments per legal review, legend, boundaries and parking updated
D	Jan 21		Updated in line with Cruden comments dated 11/01/21
E	Feb 21		Updated in line with Cruden comments and grain/substation area amended per client comments
F	April 21		Apt block (76-81) handed as per planning change

- Legend**
- Development boundary
 - Individual plot boundary
 - Adopted roads
 - Adopted footpaths
 - Common soft landscaping to be maintained by factor
 - Common hard landscaping/footpath to be maintained by factor
 - Common to plots 76-81 inclusive
 - Substation - Energetics
 - / / / / 1m right of access all round substation
 - Parking spaces for Plot 41 within ground floor of coach-house Plot 65
 - Parking space for Plot 54 within ground floor of coach-house Plot 63
 - Parking space for Plot 55 within ground floor of coach-house Plot 64
 - Parking space for Plot 56 within ground floor of coach-house Plot 64
 - Parking space for Plot 57 within ground floor of coach-house Plot 64
 - Parking space for Plot 62 within ground floor of coach-house Plot 63
 - Parking spaces for Plot 68 within ground floor of coach-house Plot 93
 - Parking space for Plot 69 within ground floor of coach-house Plot 93
 - Parking spaces for Plot 72 within ground floor of coach-house Plot 98
 - Parking spaces for Plot 97 within ground floor of coach-house Plot 96
 - x x x x External car parking space in front of coach-house (hatch coloured as per notes above per relevant plot)
 - / / / / 'Grain' Cabinet (fibre) and future expansion area

Notes :
 Site Grid Reference: NT443758
 E: 344321 N: 675820
 all dimensions 'or thereby'



Site Layout - First Floor Level

MGA ARCHITECTURE
 www.mgaarchitecture.co.uk

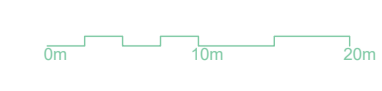
Project
Residential Development
 Longniddry
 PFP Developments

Drawing
Development Plan Approval
 Ground Floor Site Layout

Date **Oct 20** Scales **1:500@A1**

Project Nr. **1335** Drawing Nr. **DPA-01** Rev. **F**

22 Rubislaw Terrace, Aberdeen, AB10 1XE - 01224 643117 - office@m-g-a.co.uk
 This drawing is copyright of Michael Gilmore Associates Ltd. ©



Drawing to be scaled for planning purposes only. Dimensions must not be scaled from this drawing for construction. All dimensions to be checked prior to commencing work or prior to any components being manufactured. Any discrepancy to be reported. All work and material to comply fully with all current & relevant British Standards Codes of Practice, building regulations, IEE regulations and all HSE acts.

Revisions	Rev	Date	Comment
A	Nov 20		Site boundary amended, legend updated re coach-houses
B	Nov 20		Amended per client discussions
C	Nov 20		Amendments per legal review, legend, boundaries and parking updated
D	Jan 21		Updated in line with Cruden comments dated 11/01/21
E	Feb 21		Updated in line with Cruden comments and grain/substation area amended per client comments
F	April 21		Apt block (76-81) handed as per planning change



Legend

- Development boundary
- Individual plot boundary
- Adopted roads
- Adopted footpaths
- Common soft landscaping to be maintained by factor
- Common hard landscaping/footpath to be maintained by factor
- Common to plots 76-81 inclusive
- Substation - Energetics
- 1m right of access all round substation
- Parking spaces for Plot 41 within ground floor of coach-house Plot 65
- Parking space for Plot 54 within ground floor of coach-house Plot 63
- Parking space for Plot 55 within ground floor of coach-house Plot 64
- Parking space for Plot 56 within ground floor of coach-house Plot 64
- Parking space for Plot 57 within ground floor of coach-house Plot 64
- Parking space for Plot 62 within ground floor of coach-house Plot 63
- Parking spaces for Plot 68 within ground floor of coach-house Plot 93
- Parking space for Plot 69 within ground floor of coach-house Plot 93
- Parking spaces for Plot 72 within ground floor of coach-house Plot 98
- Parking spaces for Plot 97 within ground floor of coach-house Plot 96
- External car parking space in front of coach-house (hatch coloured as per notes above per relevant plot)
- 'Grain' Cabinet (fibre) and future expansion area

Notes :
 Site Grid Reference: NT443758
 E: 344321 N: 675820
 all dimensions 'or thereby'

Site Layout - Second Floor Level

MGA ARCHITECTURE
 www.mgaarchitecture.co.uk

Project
Residential Development
Longniddry
PFP Developments

Drawing
Development Plan Approval
Ground Floor Site Layout

Date **Oct 20** Scales **1:500@A1**

Project Nr. **1335** Drawing Nr. **DPA-01** Rev. **F**

22 Rubislaw Terrace, Aberdeen, AB10 1XE - 01224 643117 - office@m-g-a.co.uk
 This drawing is copyright of Michael Gilmore Associates Ltd. ©

